

CARD EVO

Adult Cardiectomy Reservoir

The Large Volume Cardiectomy Reservoir



CARD EVO

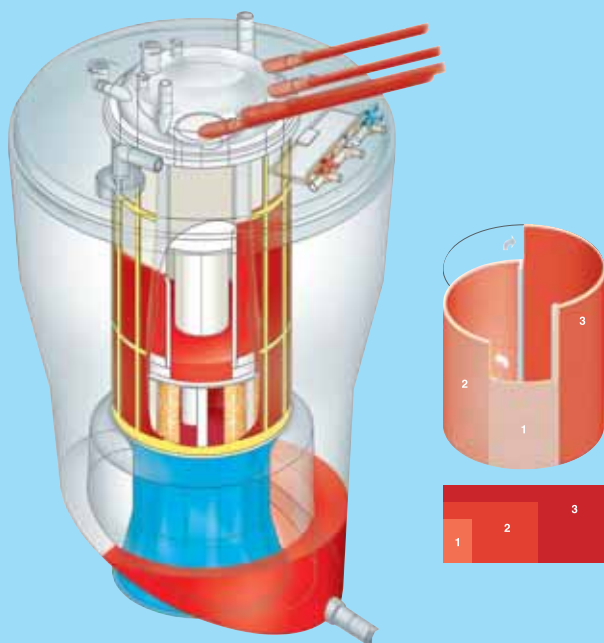
Adult Cardiomy Reservoir

The Large Volume Cardiomy Reservoir

CARD EVO can be used when needing to handle large volumes of blood and fluids during CPB and for suction fluid collection and filtration in closed circuit and open circuit configurations.

CARD EVO features a unique Variable Filtration System which allows low blood hold-up and low blood rest volume assuring advanced filtration performance and features.

Cardiomy Variable Filtration System



Cardiomy Variable Filtration System

- High filtration performance and selectivity
- Low fluid retention
- Greatly reduced surface in contact with blood

FEATURES AND CONNECTION

Max Volume Capacity (ml)	4300
Max. Blood Flow Rate (l/min)	4
Filter nominal pore size (µm)	30
Blood Inlet ports:	
Rotating filtered	3x1/4" - 1x3/8"
Vertical, filtered	1x1/4" - 1x3/8"
Luer-lock, filtered	4
Pos-lock, filtered	1
Luer-lock, unfiltered	1
Blood Outlet port	3/8"
Vent port	1/4"

ORDER GUIDE

CARD EVO	Code no. 050525
Holder for CARD EVO	Code no. 050129



Manufactured by:
Sorin Group Italia S.r.l.
Via Statale 12 Nord, 86
41037 Mirandola Modena Italy
Tel. +39 0535 29811
Fax +39 0535 25229
www.dideco.com
e-mail: cardioperfusion@sorin.com